

Mini Calabash Manual, 90 L. for handwashing

In many African villages there is a need for a simple tap, where you can easily wash your hands. Now people pour water over each other's hands from a bowl. That is cumbersome. In 2018, the Holten drinking water project had already designed a small water cistern. With 40 kg of cement you can build a cistern of 90 L. Due to Corona, the demand has now increased enormously and local masons have already built more than 100 hand-washing points in 6 African countries, at health centers, pharmacies, shops, markets, schools or at home. The local costs: € 46 each.

Eerhard Mensink from Ghana over de IJssel and Paul Akkerman are constructing a hand-washing cistern here to show.

Materials: 40 kg cement, ±120 kg construction sand, a tap with a sock, 5 m. soft steel wire. The cement blocks are reusable.

Method: construct a mold with cement blocks and wet sand. and spread 2 layers of cement inside and 1 layer outside.

Volume: the internal height is 60 cm and the internal diameter is ± 45 cm. The outer diameter is ± 50 cm.

The roof is dome shaped with a diameter of 55 diameter. The middle it is 6 cm higher than around.

Want to know more? On www.cleanwaterhealthyvillage.com you can find the MANUAL of the Calabash Cistern.



Very left: :the sand mould for the roof,



2

the sand mould for the foot and the bottom



*

a result in Kenya



4

1. cement for the foot



5

the foot is poured



foot and shell-shaped bottom

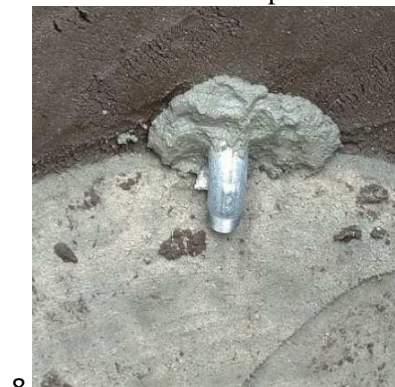


7

6. the form for the wall of blocks and moist sand.



Dark sand sticks well.



8

place sock for the tap - -

8: with tape sealed sock from the inside out to the outside pierce through the sand of the form above the cement layer of the bottom.



10



11



9. The first thin layer of cement, apply carefully and then leave it alone! As soon as the first layer of cement is firm, apply the second layer on the inside and finish nicely. 10. remove blocks when the cement has hardened. You see light sand below, where we started, dark sand above that sticks better. Advice: good quality moulding sand. 11. brush away moulding sand.



13



14



15



12. Place the lid in the wet cement. The hole should be wide enough for a sturdy arm to finish the inside and clean it later. 13. Finish the lid, after cutting off the excess edge. 14. Place the tap on the socket with teflon tape. Bend an arc of wire and attach it as reinforcement for the nose. 15. Sculpt the nose.



17



18



16. finish. NB, the nose is our trademark. 17. transport, note the shelf with handle. 18. Mini Calabash in the garden
The empty weight is approximately 150 kg